

# Recommendations for Taking Photos Prior to a Telemedicine Appointment



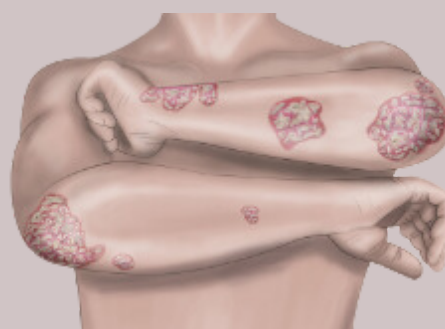
If unable to see or photograph a skin lesion, enlist the help of a family member or friend, or use the auto-timer to capture the image.

Use soft, indirect lighting to minimize shadows in the photograph.



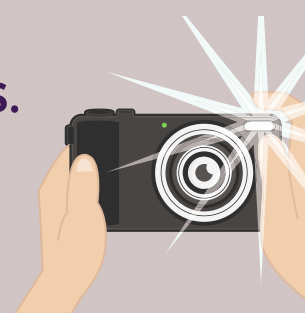
Take at least one overview shot and two to three close-up photographs of the lesion.

Ensure that the photographs are clear and focused, so that they can be accurately evaluated by medical professionals.



Avoid taking photographs in front of bright backgrounds such as windows or other sources of intense light.

When lighting conditions are poor, use the flash feature to avoid blurry or grainy images. In brighter lighting, the flash may not be necessary. However, be aware that using the flash can cause overexposure.



Do not use software to edit or manipulate the photographs.